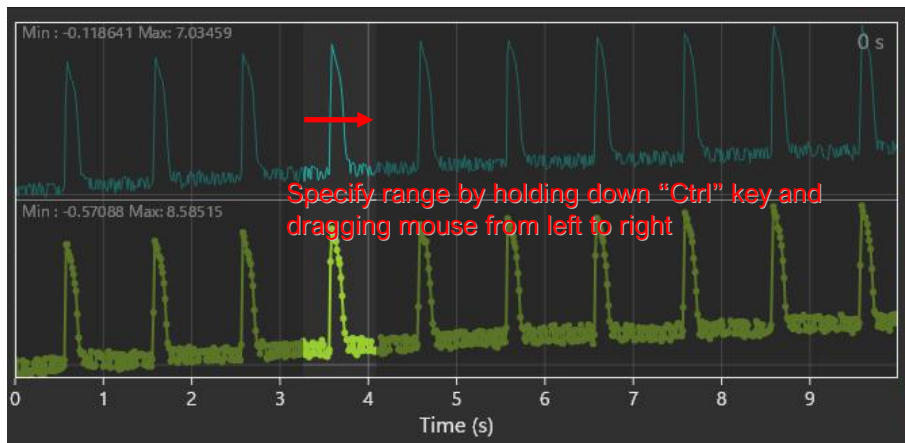


8-3-3. Single peak analysis (add peak analysis layer)

By selecting [Analyze]-[Add peak analysis layer..], you can create various maps showing the following values.

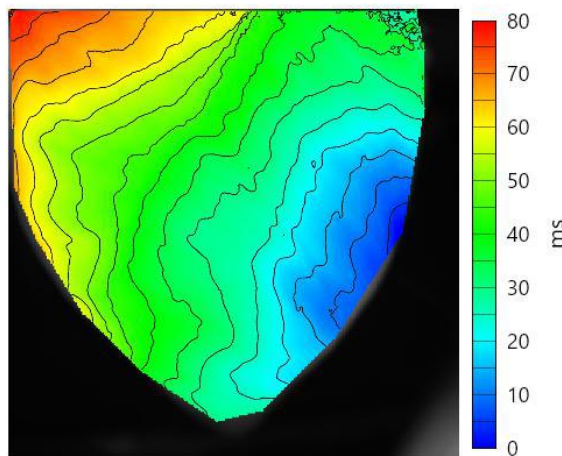
- Activation time
- Repolarization time
- Duration (APDXX)
- Activation to Peak time
- Peak to Repolarization time
- Peak time
- Peak amplitude
- Decay tau

This function targets a single peak (action potential). If there are multiple peaks in waveform, specify range on waveform (hold down “Ctrl” key and drag from left to right) before executing. It is also possible to specify range after creating a map.

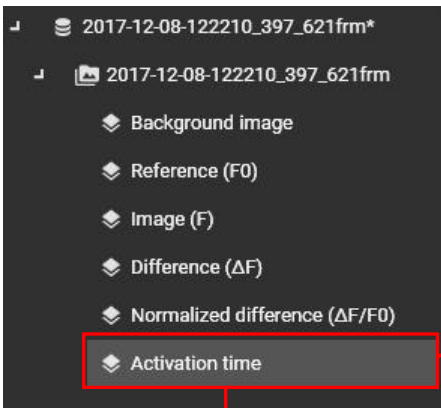


Below is an example of creating an Activation time map.

Activation time



Operation	Description
Mouse over	Coordinates and value of that point are displayed in upper left of map.
Scroll mouse wheel	Zoom in/out map
Right click	Export data: Save numerical data in CSV file format Export figure: Save the map in image format (PNG/JPG/BMP).

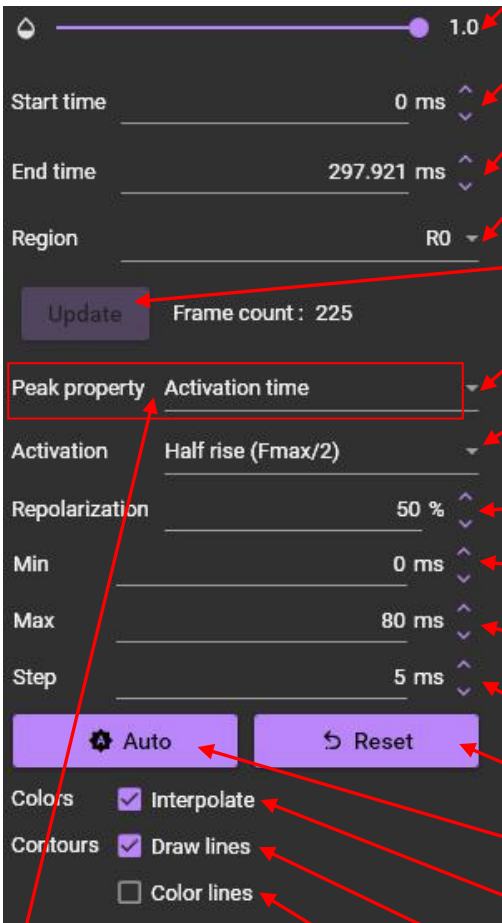


Right click

Export data: Save numerical data in CSV file format

Rename: Change title

When you click "Activation time", setting screen below is displayed at bottom left of screen.



Specify transparency of layer. The lower it is, the more transparent the layer

Specifies start of time range of map display

Specifies end of time range of map display

Select target area for map display (all pixels, ROI, mask layer)

It becomes active when "Star time", "End time", and "Region" are changed. Click to change map display

Select map type

Select activation time (Half rise (Fmax/2) / Maximum (Fmax) / Derivative max (dF/dt))

Specify XX% repolarization time

Specify minimum time to display map

Specify maximum time for map display

Specify time interval between contour line on map and dividing line on color bar

Reset settings to initial state

Automatic setting of optimum value

When turned on, color display becomes gradation

Draw contour lines on the map

Draw colored contour lines on a black and white background image to display map


- Activation time
- Repolarization time
- Duration (APDXX)
- Activation to Peak time
- Peak to Repolarization time
- Peak time
- Peak amplitude
- Decay tau

If you change the “Peak property” after creating one map, you can create another map.

Peak property Repolarization time

After changing the settings, click the “Update” button to reflect changes on map.

Update

To delete a created map, click map name to select it and then click the  button.

